



This manual is for reference and historical purposes, all rights reserved.

**This page is copyright© by M. Butkus, NJ.**

This page may not be sold or distributed without the expressed permission of the producer

I have no connection with any camera company

On-line camera manual library

This is the full text and images from the manual. This may take 3 full minutes for the PDF file to download.

**If you find this manual useful, how about a donation of \$3 to: M. Butkus, 29 Lake Ave., High Bridge, NJ 08829-1701 and send your e-mail address so I can thank you. Most other places would charge you \$7.50 for a electronic copy or \$18.00 for a hard to read Xerox copy.**

**This will allow me to continue to buy new manuals and pay their shipping costs.**

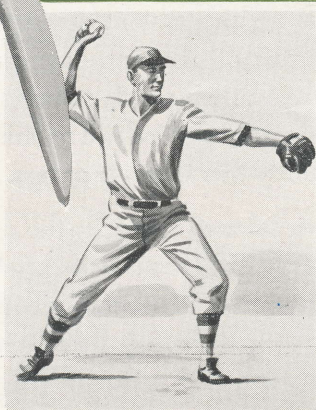
**It'll make you feel better, won't it?**

**If you use Pay Pal or wish to use your credit card,  
click on the secure site on my main page.**

PayPal Name Lynn@butkus.org

# Leicavit

## RAPID WINDER



FOR SEQUENCE PHOTOGRAPHY



## LEICAVIT

How many times have you wished you could wind your camera faster and shoot the second, third or fourth picture in that many seconds? Often a series of pictures taken in rapid sequence marks the difference between a dramatic series of newsworthy pictures and a collection of static record shots. The hit and split-second action of the play at first; centering the ball, the hand-off, the end run and the touchdown; the drama-packed moments when a speeding car leaves the track, flip-flops in the air and smashes on its nose; the fleeting, ever-changing expressions of your child opening gifts. These, and hundreds of sequence picture possibilities are open to the Leica owner when his camera is fitted with the Leicavit Rapid Winder. The entire roll of thirty-six pictures can be exposed in twenty-five seconds or less.

The Leicavit replaces the regular base-plate on the Leica and is left in position at all times. It fits all Leica Cameras having serial numbers higher than 400,000 and no conversions or factory adjustments are necessary. The camera can be wound and used in the normal manner or used as a sequence camera by swinging the Leicavit trigger into position. The Leicavit is sturdily constructed and will give you years of trouble-free service.

## OPERATING INSTRUCTIONS

Load your Leica with a new roll of film, replacing the regular base-plate with the Leicavit. The locking lever of the Rapid Winder must be in the "auf-open" position and the unit mounted on the camera in the same manner as the base-plate. Move the locking lever to the "zu-closed" position. Wind off the necessary safe exposures and set the exposure counter as usual.

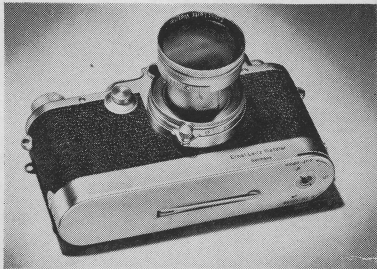
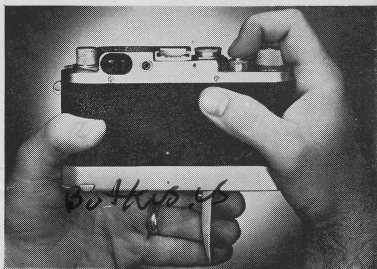
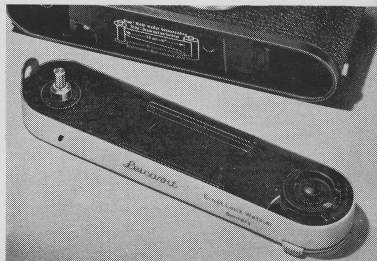
Lock the Leicavit trigger, which is folded in the base, in operating position by lifting it with your fingernail. The trigger is closed by pressing the small button on its left side and folding down.

Wind the Leica in the normal manner, using the camera winding knob. This is necessary only for the first exposure. All subsequent exposures can be made with the Leicavit trigger or the regular winding knob.

After making the first exposure, wind the camera by pulling the Leicavit trigger from right to left as far as it will go and then allow it to return to its original position. Unless this is done the shutter will not be fully wound and will not open when the release button is pressed. If the shutter does not open use the regular winding knob to wind the camera for the next exposure and then use the trigger for subsequent exposures.

When using the Leicavit to wind the camera, the finger which releases the shutter should be held clear of the winding knob and shutter release button. Hold the camera steady and use the faster shutter speeds. If slower speeds are used some camera movement may be evident, especially when taking pictures in rapid sequence.

Hold the camera in the right hand with the left thumb resting against the end of the camera. Operate the Leicavit with the first two fingers of the left hand, using a squeezing action, pressing the thumb and fingers together. Do not jerk the trigger as you will shake the camera and may tear the film perforations. When the film has been completely exposed, rewind in the usual manner. Remove the Leicavit by turning the locking lever from the closed to the open position. When the locking lever is in the closed position it is locked and must be released by pulling down on the knurled button before turning to the open position.



## PRICE LIST

### SYOOMa

16,015—Leicavit Rapid Winder for sequence photography. \$24.00

### ESOOR

14,530—Eveready Case, cowhide, with neck-strap, for Leica Camera with Elmar 50mm lens and Leicavit attached. \$12.60

### EPZOO

14,535—Eveready Case, cowhide, with neck-strap, for Leica Camera with Summarit 50mm lens and Leicavit attached. \$12.60

### EMOOX

14,540—Eveready Case, cowhide, with neck-strap, for Leica Camera with Summarit 50mm lens and Leicavit attached. \$12.60

**NOTE: The Leicavit can be used only on Leica Cameras with serial numbers of 400,000 or higher.**

**E. LEITZ, INC.**

**468 Fourth Ave., New York 16, N. Y.**